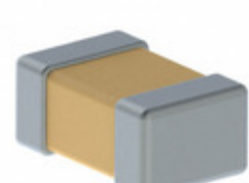


C0805C472K3RECAUTO7210



Part Number: C0805C472K3RECAUTO7210
Manufacturer: KEMET
Description: CAP CER 0805 4.7NF 25V X7R 10%
Data sheet: [ESD, X7R Dielectric](#)

RoHS Status: Lead free / RoHS Compliant
Ship From: Hong Kong
Shipment Way: DHL/Fedex/TNT/UPS/EMS

Images are for reference only.
 See Product Specifications for product details.
 Buy C0805C472K3RECAUTO7210 with confidence from
 Component-World.HK, 1 Year Warranty

[Request For Quotation](#)

PRODUCT PARAMETER

Part Number	C0805C472K3RECAUTO7210	Manufacturer	KEMET
Description	CAP CER 0805 4.7NF 25V X7R 10%	Lead Free Status / RoHS Status	Lead free / RoHS Compliant
Quantity Available	1417817 pcs	Data sheet	ESD, X7R Dielectric
Category	Capacitors	Voltage - Rated	25V
Tolerance	±10%	Thickness (Max)	0.035" (0.88mm)
Temperature Coefficient	X7R	Size / Dimension	0.079" L x 0.049" W (2.00mm x 1.25mm)
Series	C	Ratings	AEC-Q200
Packaging	Tape & Reel (TR)	Package / Case	0805 (2012 Metric)
Operating Temperature	-55°C ~ 125°C	Mounting Type	Surface Mount, MLCC
Moisture Sensitivity Level (MSL)	1 (Unlimited)	Manufacturer Standard Lead Time	11 Weeks
Lead Style	-	Lead Spacing	-
Lead Free Status / RoHS Status	Lead free / RoHS Compliant	Height - Seated (Max)	-
Features	-	Failure Rate	-
Detailed Description	4700pF ±10% 25V Ceramic Capacitor X7R 0805 (2012 Metric)	Capacitance	4700pF
Applications	Automotive, Bypass, Decoupling, ESD Protection		

Component-World.com is a Reliable Stocking Distributor of Electronic Components. We specialize in all KEMET series electronic components. We have 1417817 pieces of KEMET C0805C472K3RECAUTO7210 in stock available now. Request a quote from electronics components distributor at Component-World.com, our sales team will contact you within 24 hours.
 RFQ Email: info@Components-World.com

RELATED PRODUCTS

	Part#: C0805C472K4REC Description: CAP CER 0805 4.7NF 16V X7R 10%	Manufacturers: KEMET	RFQ
	Part#: C0805C472K3GEC7800 Description: CAP CER 0805 4.7NF 25V COG 10%	Manufacturers: KEMET	RFQ
	Part#: C0805C472K4HACAUTO Description: CAP CER 0805 4.7NF 16V ULTRA STA	Manufacturers: KEMET	RFQ
	Part#: C0805C472K4RECAUTO Description: CAP CER 0805 4.7NF 16V X7R 10%	Manufacturers: KEMET	RFQ
	Part#: C0805C472K3REC Description: CAP CER 0805 4.7NF 25V X7R 10%	Manufacturers: KEMET	RFQ
	Part#: C0805C472K3GECAUTO7210 Description: CAP CER 0805 4.7NF 25V COG 10%	Manufacturers: KEMET	RFQ
	Part#: C0805C472K3JACAUTO Description: CAP CER 4700PF 25V U2J 0805	Manufacturers: KEMET	RFQ
	Part#: C0805C472K4REC7800 Description: CAP CER 0805 4.7NF 16V X7R 10%	Manufacturers: KEMET	RFQ
	Part#: C0805C472K4RAC7800 Description: CAP CER 4700PF 16V X7R 0805	Manufacturers: KEMET	RFQ
	Part#: C0805C472K4HAC7800 Description: CAP CER 0805 4.7NF 16V ULTRA STA	Manufacturers: KEMET	RFQ
	Part#: C0805C472K4JACAUTO Description: CAP CER 4700PF 16V U2J 0805	Manufacturers: KEMET	RFQ
	Part#: C0805C472K4RECAUTO7210 Description: CAP CER 0805 4.7NF 16V X7R 10%	Manufacturers: KEMET	RFQ
	Part#: C0805C472K4REC7210 Description: CAP CER 0805 4.7NF 16V X7R 10%	Manufacturers: KEMET	RFQ
	Part#: C0805C472K3REC7800 Description: CAP CER 0805 4.7NF 25V X7R 10%	Manufacturers: KEMET	RFQ
	Part#: C0805C472K3RAC7800 Description: CAP CER 4700PF 25V X7R 0805	Manufacturers: KEMET	RFQ
	Part#: C0805C472K3GECAUTO Description: CAP CER 0805 4.7NF 25V COG 10%	Manufacturers: KEMET	RFQ
	Part#: C0805C472K3REC7210 Description: CAP CER 0805 4.7NF 25V X7R 10%	Manufacturers: KEMET	RFQ
	Part#: C0805C472K3RECAUTO Description: CAP CER 0805 4.7NF 25V X7R 10%	Manufacturers: KEMET	RFQ
	Part#: C0805C472K4JAC7800 Description: CAP CER 4700PF 16V U2J 0805	Manufacturers: KEMET	RFQ
	Part#: C0805C472K3JAC7800 Description: CAP CER 4700PF 25V U2J 0805	Manufacturers: KEMET	RFQ

Related keywords for C0805C472K3RECAUTO7210

KEMET C0805C472K3RECAUTO7210	C0805C472K3RECAUTO7210 distributor	C0805C472K3RECAUTO7210 supplier	C0805C472K3RECAUTO7210 price
C0805C472K3RECAUTO7210 download datasheet	C0805C472K3RECAUTO7210 datasheet	C0805C472K3RECAUTO7210 stock	buy C0805C472K3RECAUTO7210
KEMET C0805C472K3RECAUTO7210	Kemet [MIL] C0805C472K3RECAUTO7210		